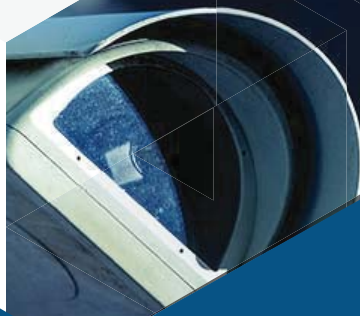


C4i communication

EXPERIENCE THE DIFFERENCE
YOUR SECURITY & SAFETY PRODUCTS

C4i360° RADAR HD UNCOOLED 640X512 Infrared Panoramic E.O.S




184mm

112mm

108mm


 Adaptability
to harsh
environments

 Lightweight
and easy
to deploy

Uncooled 640×512



PRODUCT HIGHLIGHTS

 <p>AI</p>	 <p>Visualized panorama</p>	 <p>Wide-area scene</p>	 <p>Real-time search</p>	 <p>Multi-target trajectory</p>	 <p>Virtual electronic fence</p>
 <p>Intelligent PTZ camera linkagee</p>	 <p>All time</p>	 <p>Adaptability to harsh environments</p>	 <p>Low power consumption</p>	 <p>Lightweight and easy to deploy</p>	 <p>HD picture quality</p>



APPLICATION SCENARIOS



Coastal and maritime surveillance



Border security surveillance



Oil and gas pipeline surveillance



Perimeter surveillance



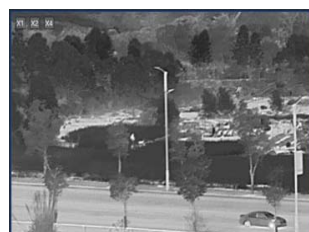
Critical infrastructure protection

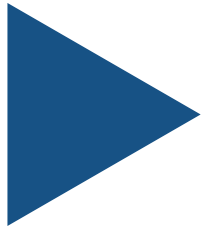
TECHNICAL DATE

Product type	C4I360°-UM313	C4I360°-UM319	C4I360°-UM613	C4I360°-UM619	
Horizontal FOV	360°	360°	360°	360°	
Vertical FOV	15°	10.4°	10.4°	18.4°	
Vertical adjustment range	± 5°	± 5°	± 5°	± 5°	
Pixel	1 98万	280万	350万	51 0万	
Scanning frequency	0.5Hz	0.4Hz	1 Hz	0.5Hz	
180 Degree scan frequency	1 Hz	1 Hz	2Hz	1 Hz	
Detector Resolution	384× 288	384× 288	640× 512	640× 512	
Dimension (L×W×H)	120mm× 170mm	120mm× 170mm	120mm× 170mm	120mm× 170mm	
Weight	2.3kg	2.3kg	2.3kg	2.3kg	
Avg. Power Consumption	25W	25W	25W	25W	
Operating Temperature	-20°C~+60°C	-20°C~+60°C	-20°C~+60°C	-20°C~+60°C	
Ingress protection	IP66	IP66	IP66	IP66	
data interface	POE/DC24V	POE/DC24V	POE/DC24V	POE/DC24V	
Communication Interface	Network interface	Network interface	Network interface	Network interface	
Detection Distance	Personnel	400m	600m	400m	600m
	Vehicle	800m	1 200m	800m	1 200m

*These data are for reference only. Pictures and technical specifications are subject to change without prior notice.

SAR IMAGES





LEARN MORE: c4icommunication.com

FOR MORE INFORMATION: contact@c4icommunication.com or +1 (302)9811340